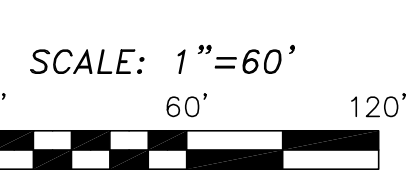
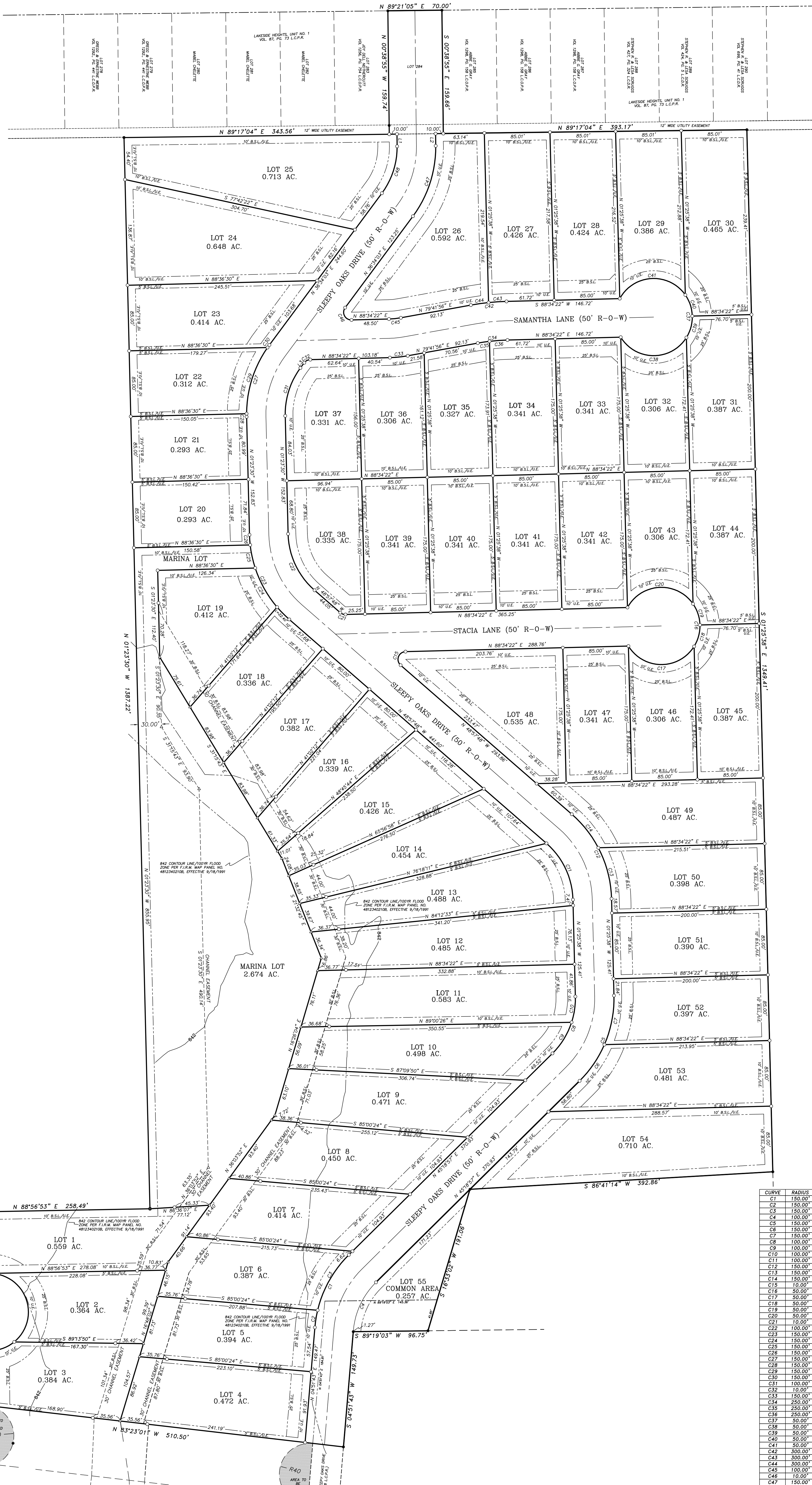
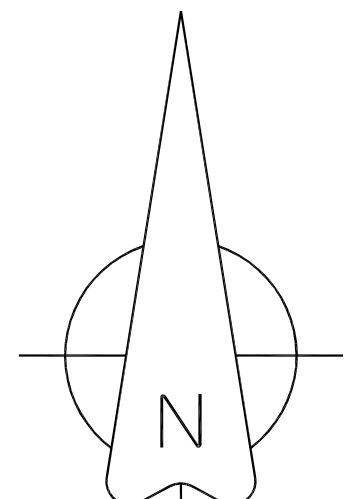


ELKHORN DRIVE



- LEGEND**
- FOUND 1/2" IRON ROD (UNLESS NOTED)
  - SET 1/2" IRON ROD WITH "5938" CAP
  - ( ) RECORD INFORMATION
  - △ CALC POINT
  - U.E. UTILITY EASEMENT LINE
  - - - B.S.L. BUILDING SETBACK LINE
  - L.C.D.R. LAND COUNTY ORIGINAL PUBLIC RECORDS
  - L.C.D.R. DEED RECORDS

LINE	BEARING	DISTANCE
L1	S 00°38'55" E	15.83'
L2	S 00°38'55" E	15.83'
L3	S 36°54'03" W	8.41'

CURVE	RADIUS	ARC LENGTH	CHORD BEARING	CHORD LENGTH
C1	150.00'	105.91'	N 25°05'20" E	103.72'
C2	150.00'	22.53'	N 09°09'57" E	22.51'
C3	150.00'	83.38'	N 29°23'54" E	82.31'
C4	100.00'	70.61'	N 25°05'20" E	69.15'
C5	150.00'	122.57'	S 21°56'59" W	119.01'
C6	150.00'	57.17'	S 34°23'46" W	56.83'
C7	150.00'	65.20'	S 11°01'29" W	64.69'
C8	100.00'	81.58'	S 21°56'59" W	78.34'
C9	100.00'	47.70'	S 31°38'59" W	47.25'
C10	100.00'	33.88'	S 08°16'42" W	33.72'
C11	100.00'	82.93'	S 25°11'43" W	80.61'
C12	150.00'	124.45'	S 25°11'43" W	120.91'
C13	150.00'	68.82'	S 14°34'13" E	68.21'
C14	150.00'	55.63'	S 36°20'16" E	55.31'
C15	10.00'	24.00'	N 19°48'17" E	18.64'
C16	50.00'	261.80'	S 01°25'38" E	50.00'
C17	50.00'	101.67'	N 89°40'55" W	85.04'
C18	50.00'	29.23'	S 15°19'05" W	28.81'
C19	50.00'	29.23'	S 18°10'21" E	28.81'
C20	50.00'	101.67'	N 86°49'39" E	85.04'
C21	10.00'	2.41'	N 00°17'24" W	2.24'
C22	100.00'	83.03'	N 25°10'59" W	80.66'
C23	150.00'	124.54'	N 25°10'59" W	121.00'
C24	150.00'	56.37'	N 29°15'53" W	56.00'
C25	150.00'	30.60'	N 12°15'59" W	30.55'
C26	150.00'	13.17'	N 03°54'25" W	13.16'
C27	150.00'	99.38'	N 17°35'16" E	97.57'
C28	150.00'	4.02'	N 00°17'24" W	4.02'
C29	150.00'	91.27'	N 17°34'57" E	89.87'
C30	150.00'	4.08'	N 35°47'17" E	4.08'
C31	100.00'	66.25'	N 17°35'16" E	65.05'
C32	10.00'	9.08'	N 62°34'12" E	8.77'
C33	150.00'	23.23'	S 84°08'09" W	23.21'
C34	250.00'	36.72'	N 84°08'09" E	36.68'
C35	250.00'	15.41'	N 81°12'52" E	15.40'
C36	250.00'	23.31'	N 85°54'05" E	23.30'
C37	50.00'	261.80'	S 01°25'38" E	50.00'
C38	50.00'	101.67'	N 89°40'55" W	85.04'
C39	50.00'	29.23'	S 15°19'05" W	28.81'
C40	50.00'	29.23'	S 18°10'21" E	28.81'
C41	50.00'	101.67'	N 86°49'39" E	85.04'
C42	300.00'	46.46'	N 84°08'09" E	46.42'
C43	300.00'	23.30'	N 86°20'52" E	23.30'
C44	300.00'	23.16'	N 81°54'39" E	23.16'
C45	100.00'	15.49'	S 84°08'09" W	15.47'
C46	10.00'	22.34'	N 27°25'48" W	17.98'
C47	150.00'	97.43'	S 17°57'34" W	95.73'
C48	100.00'	64.95'	S 17°57'34" W	63.82'

SHEET 1  
 PROJ. NO. 07076  
 DATE: 7/29/2008  
 SCALE 1" = 60'  
 OF 1

FINAL LAYOUT  
 CATHARINE COVE

PREPARED FOR:  
 N.S.S. DEVELOPING

CUPLIN & ASSOCIATES  
 3010 WEST RR 1431, SUITE B  
 KINGSLAND, TEXAS 78639  
 PHONE: 325-388-3300  
 FAX: 325-388-3320

DATE	NO.	DESCRIPTION	BY
	3		KPC
	2		JIB
	1		

REVISIONS  
 COPYRIGHT 2007